



MALHERBEX™
PROPERTY GROUP



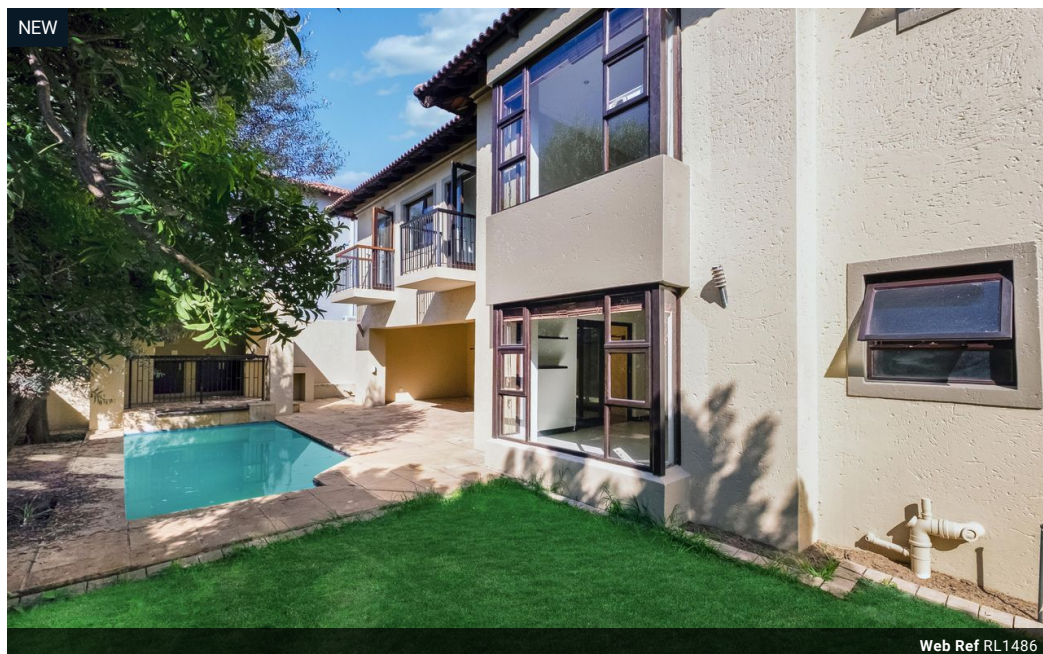
Elisha Botterill
0845558155
elisha@malherbex.com

Contact Head Office

011 7869364

Unit 1 Cyrus House (Building 13) Mulberry
Hill Office Park, Dainfern, Sandton, 2191

5 Bedroom House To Let in Dainfern



R42,000 pm

Lease Period Negotiable
Annual Escalation -

Availability Immediately

Deposit -

🛏 5 🚿 4.5 🚗 2

Spacious 5 Bedroom Family Home In Secure Estate

Crafted for both family comfort and easy entertaining, this home offers a seamless flow throughout its spacious interior. From the moment you step into the impressive entrance hall, you're welcomed by the inviting warmth and practicality of the living areas. Both the formal lounge and family room open effortlessly onto a generous covered patio-ideal for hosting-overlooking a sparkling swimming pool and charming garden.

The dining area is ideally positioned next to the kitchen, where large windows invite in natural light. The well-appointed kitchen features ample cabinetry and generous workspace, making it perfect for preparing meals for family or guests.

The ground floor also includes a private guest suite with its own en-suite bathroom, offering comfort and convenience for visitors.

Upstairs, you'll find a pyjama...

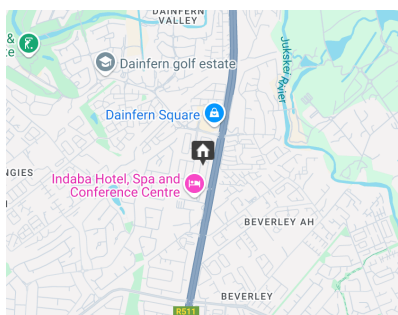
Features

Pets Allowed Yes

Interior	
Bedrooms	5
Bathrooms	4.5
Recep. Rooms	2
Studies	1
Furnished	No

Exterior	
Garages	2
Pool	Yes

Sizes	
Land Size	602m ²



<https://www.malherbex.com>